



# Riffles

The Monthly Newsletter of the  
East Jersey Chapter of Trout Unlimited

Volume 45

November 2014

Number 11

## President's Beat

The chapter stocking of the Ramapo took place Saturday, November 1 and I am happy to say we had a great turnout, including a couple of youngsters who were eager to help. Unfortunately, low water prevented float stocking, but we had plenty of people to distribute the fish by bucket and, hopefully, the river will fish well all winter as long as we all practice catch and release. The stocking was our last work day of the year and I want to thank everyone who participated in any of the chapter events this year.

I had a chance to look at the weir that we worked on the last 2 years and it seems to be doing its job; it is directing the flow away from the banks and starting to create a little more depth in the center of the river.

While the work events are over, we still have a few fishing trips planned, including our first fall steelhead trip on the Salmon River and a few local fishing days.

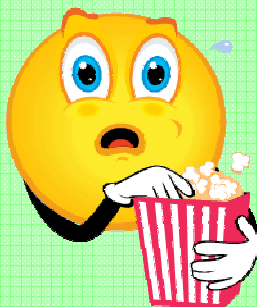
I also attended the Angler of the Year celebration at the Raritan Inn on Saturday. This event is run by the Inn and Shannon's fly shop, which are both long time supporters of TU. It is always a fun event and also a chance to mix with members of other chapters. The competition is not taken too seriously and I think all

Continued on page 3

When: November 12 at 7:30 PM

Where: American Legion Hall  
33 West Passaic Street  
Rochelle Park, NJ

## November's Meeting



An old fashioned movie night instead of a speaker! The movie, DamNation, addresses dam removal and stream restoration - topics that are high on our EJTU list of interests.

But, to enhance the movie experience, we will also have popcorn for you.

## Welcome to October's New Members



Karen Iverson	Montclair
Charlotte Mager	Leonia
Kim Smith	N Haledon
Sandra Stevens	Dumont

## EJTU Calendar

If you wish to go on one of the fishing trips, contact the trip coordinator well in advance. If the trip requires reservations or other arrangements, openings are often limited and the reservations must be made in advance.

Other events are facilitated by Rich Malizia. If you have questions or wish to volunteer, contact Rich at 973-304-0789 or remqcp@optonline.net.

Please consult EJTU's web site's "Upcoming Events" for the most up-to-date information and details.

**November 1 [Sat]** EJTU Ramapo Fall trout stocking

**November 14 -16** Steelhead trip Pulaski, NY

**December 10 [Wed]** Christmas Buffet

**January [Date TBD]** Pequest trip  
**January 14 [Wed]** Entomology presentation

**February 11 [Wed]** Fly-Tying Night Banquet

## For Sale at Meetings

We will have fly tying material, that was donated by Lucille Wilson, for sale at our monthly meetings.

Lucille graciously donated the material in honor of her husband, Art Wilson, who was an avid fly-tier, fly fisherman and conservationist.

Elio Chiavola

**East Jersey Chapter  
Trout Unlimited  
Board of Directors**

**President**  
Bruce Seiden

**1st Vice President/Webmaster**  
Bill Borowski

**Treasurer**  
Igor Zaretsky

**Recording Secretary**  
Dino Eftychiou

**Membership Secretary**  
Ken Barile

**Education**  
Doug Penna

**Speakers**  
Chris Henrickson

**Merchandise**  
Elio Chiavola

**Trout in the Classroom**  
George Petersen

**Points**  
Paul Reithmeier

**Riffles Editor**  
Ray Cappock

**Conservation Chair**  
Rich Maizia

**Founding President**  
Don Ecker

**Monthly General Member Meeting:** The East Jersey Chapter of Trout Unlimited meets on the second Wednesday of each month at 7:30PM.

**Location:** The American Legion Hall,  
33 West Passaic St, Rochelle Park, NJ. 07662.

**Monthly Board Meeting:** Board Members of East Jersey Trout Unlimited meet on the last Thursday of each month at 7:30PM.

How to contact us: Website <http://www.ejtu.org>  
Mailing Address:  
East Jersey Chapter, Trout Unlimited Box 366  
HoHoKus, NJ 07423-0366  
For Membership Information call Ken Barile at: 201-391-9214 or email [kenbarile@optonline.net](mailto:kenbarile@optonline.net).  
For Information on trips and other Chapter Activities go to [www.ejtu.org](http://www.ejtu.org)  
For East Jersey and National Trout Unlimited information, visit our website at <http://www.tu.org>. Go to chapter number 091 and you will get the latest information about our chapter.  
Riffles is your publication so we invite and encourage every member to contribute articles, tips, and stories. The articles may relate to trout, trout fishing, fishing in general or conservation but all articles are published at the discretion of the editors and should meet EJTU standards regarding protecting our environment and the merits of 'catch and release' techniques. Pseudonyms may be used but the editors must be informed of the name of the member who writes the article. Email to [raycapp@optonline.net](mailto:raycapp@optonline.net)

**Conservation Notes**

By the time you read this we will have completed both the State stocking on October 10<sup>th</sup> and the EJTU stocking on November 1<sup>st</sup>. Thankfully, water levels have improved significantly and the fish should adapt well to their new environment. I was surprised to see several very senior citizens armed with rods and reels waiting for the State truck to arrive on October 10<sup>th</sup>. I guess that the limited number of stocking days this spring created a void in their fishing schedules. Reports from our members cite success with both nymphs and dries although floating leaves create a real challenge to a drag-free drift. There are now lots of fish in the Ramapo so get out and fish, but treat them kindly so they last until Spring.

Representatives from the Pilgrim Pipeline made a presentation and entertained a Q & A session at the Municipal Building in Kinnelon on October 21<sup>st</sup>. The turnout of people from various interest groups created an overflow crowd and many people could not get into the meeting room. Representatives from several unions were there to promote the job creating aspects of the project. Many Kinnelon residents and members of numerous environmental groups raised concerns or spoke against the project. A map showing the proposed route through New Jersey shows the pipeline following existing rights-of-way and easements on the east side of the Ramapo Mountains, crossing the ridge near Skyline Drive and continuing south. The pipeline will cross the Wanaque and Pequannock Rivers and eventually go through Troy Meadow and other

sensitive areas in the Parsippany and Roseland areas. Of course, the owners promote the "safety" of pipelines based upon



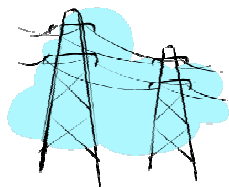
the number of gallons spilled vs. the number of gallons carried. That comparison shows pipelines have a better safety record than rail or barge. However, in absolute numbers, pipelines spill many times more product than other means of transport. The owners also claim they provide 2,000 construction jobs but, when completed, the pipeline will only have 40 permanent workers. Railroad workers will lose jobs and Pilgrim estimates eliminating 1,000 barge trips per year on the Hudson. Sounds like a job killer to me. Of course, despite the outrage voiced by many, Pilgrim already has secured access to the rights-of-way and easements which happen to be owned or controlled by other energy-related companies. In areas where they will have to secure access over private property, they admitted that they will use eminent domain if they are unable to get landowners permission. The short version is that it seems to be a done deal. Let's hope that in the areas of shared rights-of-way where this highly flammable oil will be within feet of natural gas transmission lines, no one lights a match. Did I mention that there will be two pipelines? One carrying crude to Linden and the other carrying refined pro-

Continued from page 2

ducts north. I guess that means that not all of it will be shipped overseas.

The Casino planned for Sterling Forest received a minor setback when the Palisades Park Commission turned down the request to build a new interchange on the Thruway at Route 17A. However, the promoters are advertising their moneymaking prowess at Aqueduct Raceway as proof that they should be awarded the gaming license for Sterling Forest. New York State will award one license in the southern-most counties. Information on other proposed locations does not seem to directly impact environmentally sensitive areas. Consider sending a letter to the New York State Gaming Commission, PO Box 7500, Schenectady, NY 12301-7500 or e-mail to [info@gaming.ny.gov](mailto:info@gaming.ny.gov). To learn more about the planned development go to [sterlingforest-resort.com](http://sterlingforest-resort.com). You will see what having billions of dollars enables you to do when building a web site. Pretty slick

Rich Malizia



**Power**

About half of the energy produced in the United States comes from five states which produce more power from Natural gas, coal, oil and nuclear reactors than they consume: Texas, Wyoming, Pennsylvania, Louisiana and West Virginia. (Wall St. Journal; Saturday August 9, 2014)



**Don't Miss this one!**

If you missed the fun, prizes, camaraderie and good food at the last EJTU Annual Banquet, don't miss the coming one.

Biagio's, in Paramus, was great so we have reserved a banquet room again.

The Date March 28, 2016

Look for more information in future Riffles and on the EJTU web site, [ejtu.org](http://ejtu.org)



**How Long Have You Been a Member?**

Have you been a member of East Jersey TU for a while now? Ten years or longer? If so, you are eligible for a small token of appreciation from the Chapter.

The Chapter will give pins, denoting ten and twenty-five years' membership in EJTU, to those members who have reached these milestones during our December meeting/buffet. The pins have been tastefully designed showing the EJTU logo and either the numeral 10 or 25.

**Overheard on the Stream**

While carrying two car tires that he pulled out of the Ken Lockwood Gorge, Marty Adamkiewicz was overheard saying, "I got two rainbow in the morning and two radials in the afternoon."

Nice work, Marty, who added as a reminder: "Release and recycle."

Continued from page 1

the contestants enjoyed themselves in spite of the poor weather since it gave everyone a chance to fish the Inn's private water on the South Branch of the Raritan. In past years, few fish were caught and this year the fishing improved later in the day after the competition ended. The day ended with a banquet where the proceeds from raffles went to the NJ State Council. This was the 5<sup>th</sup> annual event and you should mark your calendar for next year.

Speaking of banquets, we have secured a date for our banquet; it will take place on March 28, 2015 at Biagio's Ristorante in Paramus for the second year. Please mark your calendars now so you don't miss it. A banquet committee is being formed to help distribute the workload. If you are willing to pitch in, please let me know.

Bruce Seiden

## Kill That Fish!

You would expect most state fish and wildlife agencies to recommend that fish that are caught for sport and not for table fare be treated as gently as possible and then released, catch and release. There are, however, fish for which this is not true.

One of them is the Lionfish, a native of the Indo-Pacific and Red Sea, that has colonies on US reefs from Florida to North Carolina. These problem fish, originally released from aquaria, have no natural enemies or diseases in this area and are armed with venomous spines so they continue to spread in warm waters. They have been found as far north as Rhode Island in summer, but they cannot survive in the north's colder winter waters.

In Florida, where up to 200 per acre can be found, the Lionfish is said to arrive on a reef, eat everything in site and then move on to another reef, leaving little for the economically important native fish.



If you are in the south during the winter and catch a Lionfish or find one on your hook next summer in our neighborhood, don't admire its colorful display. Be careful of the spines and, if it's big enough, filet it as they are good to eat. If you don't want to eat it, destroy it.

Florida's regulations are, "Minimum Size Limit None; Daily Bag Limit, Unlimited." Florida's Fish and Wildlife Conservation Commission ([myfwc.com](http://myfwc.com)) says that Lionfish are found in their non-native ranges up to 18.5 inches and as small as 1.1 inches, while average size is 12 to 15 inches

## Wader Repair - the way the pros do it

This is the way they find those annoying pinhole leaks at Shannon's fly shop. It is also how Patagonia recommends finding wader leaks.

As long as you know the general area that is leaking this works like a charm. You will need Isopropyl Rubbing Alcohol, cotton balls, sharpie marker, a plastic sandwich bag cut into small pieces, and wader patch. I recommend Loon Sunset Wader patch, which is UV activated, dries almost instantly (in direct sunlight) and lasts for years.

Put the Isopropyl Rubbing alcohol on a cotton ball or small piece of a rag and thoroughly wet the **INSIDE** of the waders in the area where the leak is suspected to be. Then look at the outside of the waders and you will see every pinhole show up as a tiny

dark (wet) spot. The alcohol will dry quickly, so use a sharpie to mark each hole before it dries.

Then, on the inside of the waders, apply a small amount of wader patch, cover it with a piece of the plastic bag and press it flat with your fingers. Then place the waders in the sun, making sure the sun hits the patch directly. After about a minute you can peel away the plastic and it will leave a very flat flexible patch that will not be visible from the outside of the waders. By pressing the patch with the plastic you ensure it gets into the textured lining most breathable waders have and seals the area around the hole.



If, you do not want to take any chances and don't care if the repair is visible you can always add a second patch to the outside of the waders, either with just a small drop of wader patch or by using the plastic to make a larger flat repair

You longer need to fill your waders with water to find the leak and then wait hours for them to dry so you can properly patch them.

Bruce Seiden

Visit the East Jersey TU  
web site for  
up-to-the-minute  
Information:

[www.ejtu.org](http://www.ejtu.org)

## EJTU Strategic Plan Update

When we launched the EJTU Strategic plan at the beginning of 2014, we promised the membership we would keep them informed of our progress in implementing the plan. While we provide updates several times a year at the monthly meetings, we also want to send a brief update to the entire EJTU membership to keep them informed of the growth and development of our chapter.

### Conservation:

We enhanced the *mono bin recycling program* by updating the signage and putting bins in additional sites.

Two clean up projects were done on the Ramapo River in 2014.

Completed the Cresskill Brook dam removal project. Plantings were made to maintain the banks, the plants continue to thrive and brook trout reside in the new stream.

The weir built above the Glen Gray bridge to stem riverbank erosion was repaired to re-channel water, further allowing riverbanks to rebuild.

### Funding:

We are actively working with our vendor to upgrade our chapter logo to align it with TU national, and are developing Tee shirts and other items using the new logo. These will be for sale to members.

### Communication:

We launched an EJTU Facebook page that highlights our chapter's activities and events. We continue to get good traffic and "likes" for our Facebook site. EJTU has redesigned our website to make it more current and easier to navigate. The new website provides us with the ability to provide "rich-media" content to our members and interested

parties. Look for its launch later in the year.

We are now using the mailing list tool MailChimp to enable us to send better mail content and control its distribution to the members.

A new, more graphic tri-fold EJTU brochure, that better highlights the diversity of our group and our activities, is in development.

EJTU business cards have been developed for the chapter. They will be given to local fishermen to encourage them to stay "connected" to our organization and to perhaps consider joining TU.

Membership anniversary buttons that recognize and reward long-standing members of our chapter have been designed. Active members with twenty-five and ten year anniversaries will receive a button.

An EJTU Youtube channel has been developed and will be launched in concert with the new EJTU website later this year. We are working to develop an "all-inclusive" event calendar that shows all scheduled EJTU activities for the coming year, making it easier for members to keep abreast of our activities and plans.

### Engagement:

We were involved in many community service and education programs in the past year. These included support for local fishing derbies, stream clean-ups, and numerous fishing and fly tying demonstrations at ecological events and open houses. We continue to provide membership with social opportunities throughout the year. These in-

clude the Holiday party, our pig roast at the Catskill Fly Fishing Museum, and our swap meeting and barbeque that takes place every July. We are continually looking for opportunities to improve these events. Your ideas for improvement are greatly appreciated.

The presentation topics at our monthly meetings have been expanded to include conservation issues and skill development presentations. The membership has received these changes well.

The scope and diversity of our chapter fishing trips continues to expand. This year we added a kayak fishing trip to Swartzwood lake, and we returned to the Ausable river in New York state for some fine trout fishing.

We have enhanced our trout stocking and woodchip spreading programs by enhancing our branding. We gave all attendees EJTU branded Tee shirts to highlight both the activities and our commitment to **Cold Water Conservation** which is at the core of Trout Unlimited.

You can see that much was accomplished by our chapter this year. But there is more to do. We can use your help to make the East Jersey Chapter of Trout Unlimited the best chapter in the state.

If you have not participated in any of our activities, I encourage you to get involved. It does not take much time, and the work is both important and rewarding.

Ken Barile  
Coordinator,  
EJTU Strategic Plan

## Paw Paw in Fall

[Paw Paw is a little known fruit tree that is native to New Jersey]



## The Library Display



Doug is moving again! He will install the EJTU library display in the Wood Ridge Library for the month of November.

Stop by and take a look at it. The library is located at 231 Hackensack St., Wood-Ridge, NJ

**ACADEME**, n. An ancient school where morality and philosophy were taught.

**ACADEMY**, n. [from **ACADEME**] A modern school where football is taught.”

Ambrose Bierce;  
“*The Devil's Dictionary*”

## Housatonic Holiday

I had the pleasure of organizing the recent (September 26 – 28, 2014) EJTU Fishing/Camping trip to the Housatonic River.

The weather was great for the eighteen EJTU members who attended the trip this year. The days were sunny and seventy degrees and the evenings were cool, perfect for falling asleep to the sound of the river running beside the cabins and tents at our campsite.

While the water in the river was low, it was perfect for wading in most areas. Fish congregated in the deeper pools and runs, making them easier to find, but not easier to catch.

The trout were feeding on small Blue Winged Olive emergers, sizes 20 – 24, the occasional flying ant, and if you were lucky, a few fish were fooled by streamers.

Due to low water, the state did not stock 9,000 trout, as planned. They only stocked 1,000 fish and will stagger the remainder of the stocking throughout the rest of the year, hoping the water level will rise.

However, the local fly shop, The Housatonic Outfitter, also stocked 150 large rainbow trout (13 to 18 inches) in the Push'em Up pool. These fish were more aggressive and easier to catch. Many of us fished this pool with some success.

Some members cooked their own meals at their campsites, but the local eatery, the Cornwall Country Market, provided great and reasonably-priced breakfast and lunch fare. A group of us drove into Kent, Connecticut on Friday night for a meal at the Pasta Grill where the food, beer, and conversation were enjoyable. Saturday night, we had dinner at the Wandering Moose Café, and were entertained by Russell, the chef and owner.

Each evening found us gathered around a campfire. We were warmed by the fire and our camaraderie as we shared stories about our fishing, our other interests, and our plans.

This fishing trip is an annual event so, if you didn't make the trip this year, put it on your calendar for the last week in September 2015.

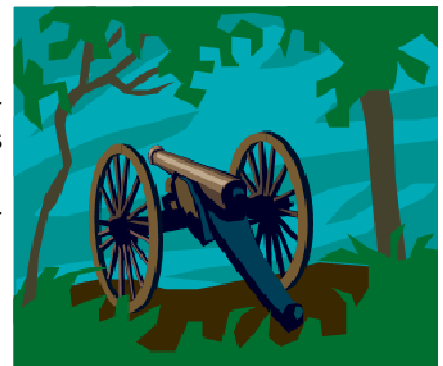
Ken Barile

[Some photos of the trip are on the following page]

## Flying Fish

(From the November 2014 issue of Outdoor Life magazine)

To facilitate salmon and steelhead restoration, Washington wildlife officials tested a vacuum operated fish cannon. Administrators are now concerned employees have too much fun at work.



# EJTU Housatonic Trip

