



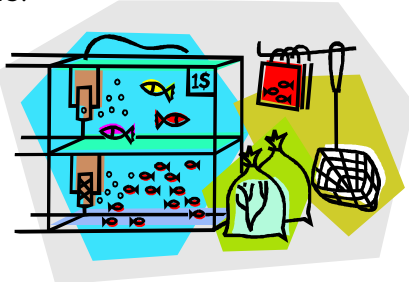
Riffles

The Monthly Newsletter of the
East Jersey Chapter of Trout Unlimited

President's Beat

As many of our members know, I am a professional educator. I was employed for more than thirty years by the Board of Education in Oakland and I continue to teach at Felician College as an adjunct professor in the Department of Teacher Education, a position I have held for the past eight years.

With that background in mind, I am very pleased to announce that EJTU's Board of Directors recently passed a motion to supply funding for a program entitled Trout in the Classroom (TIC) which will be coordinated in the Pequannock School District by Mr. Luke Diglio. This program, which has been in place in various schools across the country for more than 20 years, has been implemented in the Northeast since 1997 when Joan Stoliar started it in New York. Prior to this, the Township of Sparta was the only district in New Jersey to host TIC.



Trout in the Classroom is a program wherein an aquarium is set up in a classroom in order to incubate trout eggs and then rear the fry until they can be released into a local stream. The individual teacher and the students are responsible for daily maintenance and observation, thus incorporating a hands-on experience into the environmental education of the class. The program will also give East Jersey Chapter the opportunity to become more involved

(Continued on page 2)

When: June 14 at 7:30 PM
Where: American Legion Hall
33 West Passaic Street
Rochelle Park, New Jersey

June Speaker George Daniel

did an outstanding job with his last presentation
and will be bringing us his new program on

Nymphing

Salty Browns

As the summer progresses, don't forget the "Sea-run" browns that call the Manasquan River home.

During the last nine years, the NJ Department of Fish and Wildlife has stocked 250,000 young six to eight inch brown trout in the Manasquan River. The Manasquan flows from a fresh water section, through a tidal section, then out to the Atlantic, so, since the browns don't have to hang around in Allaire State Park, they go out to sea for a couple of years and fatten up.

After they have gained a couple of pounds, the fish decide to visit their home and they once again head for the Manasquan. They aren't coming home to see how the old neighborhood has changed, but to reproduce, so they head all the way upstream to fresh water.

They feel the urge to repopulate the river in the summer and enter the Manasquan in the fall.

If you fish the Manasquan and catch a sea-run brown Fish and Wildlife would like you to report your catch to them at (908) 236-2118.

Plea For Youth

We continue our involvement in local educational programs for kids. June 3rd was Ramapo River Day, June 10th was Meadowfest and June 17th is both the fishing derby in Glen Rock and a clean up and fish stocking in Wayne. Each of these events requires man (woman) power but when I look at the members who assist at these events, with few exceptions, all I see are lots of gray and balding heads. The drivers of EJTU's programs are a lot of old men. Yes, a few 40 year olds are very active but our membership demographics should allow us to bring out many more young members. We know that we are competing with jobs, family, scouts, sports and many other priorities in life. However, if we are to continue to be a major environmental force in New Jersey we need more participation from our young members.

We appreciate the efforts of the old timers and, whether their motivation is doing something that will benefit their grandchildren or just filling the time waiting for that little blue pill to take effect, they are getting the job done. But as we look at members aging, taken ill or otherwise having to reduce their commitment, the need for help from our youth (that is anyone under 50) becomes more pressing.

I suggest some incentives. I understand that TU has recently formed the Hooters Chapter in Paramus. After all they have their own airline (do they fly dirigibles) so why not a TU chapter. We could have joint meetings to encourage our younger members to attend. We could also try to



East Jersey Chapter Trout Unlimited Board of Directors

President

George Petersen

1st Vice-President

Bob Ribar

2nd Vice-President

Karen Canning

Treasurer

Bruce Seiden

Recording Secretary

Bill Canning

Membership Secretary

Ed Sikorski

Conservation Chairman

Herman Drenth

Education

Doug Penna Bob Ribar

Pequest Programs

Bob Hresko

Speakers

Mike Gallart

Merchandise

Basil Santamaria

Riffles Editors

Gary Heger Ray Cappock

tu@cataloguepublishers.com / raycapp@optonline.net

Points

Ken Vander Pyl

Dinner

Dave & Barbara Wedlick

Shows

Basil Santamaria

Web Master

Bill Borowski

Federation of Sportsmen's Rep

Ray Cappock

Founding President

Don Ecker

Monthly General Member Meeting: The East Jersey Chapter of Trout Unlimited meets on the second Wednesday of each month at 7:30PM.
Location: The American Legion Hall, 33 West Passaic Street, Rochelle Park, NJ. 07662.

Monthly Board Meeting: The East Jersey Chapter of Trout Unlimited Board Members meet on the last Thursday of each month at 7:30PM.
Location: The Bergen County Community Center, 327 East Ridgewood Ave., Paramus, NJ 07652.

How to contact us:

Website <http://www.eastjerseytu.org>

Mailing Address:

East Jersey Chapter, Trout Unlimited Box 366 HoHoKus, NJ 07423-0366

For Membership Information call Ed Sikorski at: 201-337-6396 or email to: dored100@hotmail.com

For Information on trips and other Chapter Activities go to www.eastjerseytu.org

For East Jersey and National Trout Unlimited information, visit our website at <http://www.tu.org>. Go to chapter number 091 and you will get the latest information about our chapter. Riffles is your publication so we invite and encourage every member to contribute articles, tips, and stories. The articles may relate to trout, trout fishing, fishing in general or conservation but, all articles are published at the discretion of the editors and should meet EJTU standards regarding protecting our environment and the merits of 'catch and release' techniques. Pseudonyms may be used but the editors must be informed of the name of the member who writes the article. Email to either: tu@cataloguepublishers.com or raycapp@optonline.net. Each piece of material that is published earns you 10 points towards your next goal in the points program.

(Continued from page 1) Presidents Beat

with helping to teach youngsters about aquatic life, water quality and stewardship of natural resources.

I applaud Mr. Diglio, knowing that TIC requires a commitment of time which goes well above and beyond normal teaching duties. It means that the trout will have to be tended and monitored from September to June with no breaks for Thanksgiving, Christmas or Spring Break. This implies that other staff members of the school community become involved in the maintenance.

Because of my professional history I am also aware of the tremendous pressure placed on teachers since the onset of the Core Curriculum Standards and the State mandated proficiency tests. (Some teachers have told me that they do not have time in the academic year to include enrichment programs because of the time constraints and pressures placed on them by the State and their local districts.) I have seen many quality programs get pushed aside because of these same time constraints and pressures.

With all of that said, we will be supporting Luke with our resources and we congratulate him, his administrators and support staff for agreeing to implement this excellent program. Hopefully TIC will serve not only to rear trout but also to spur interest in some of the students to pursue a career in the sciences. (How about a home-grown fisheries biologist or aquatic entomologist?) Luke will certainly be fostering an awareness of stewardship and environmental concern among the participants.

One final note: the class will be raising brook trout (the official fish of New Jersey) and the NJ DEP must approve the stream into which the fish will be released.

George Petersen

Fly of the Month

Things are getting hot, and I don't mean the weather. The hatches we dreamed of all winter are in full swing.



The Mayflies both large and small have got our attention. March Browns, Green Drakes, Sul-furs, & Olives have all been

getting the trout's attention as well.

The next time you come home from a days fishing and sit down at your vise to refill your fly box, how about tying a dozen extra for your chapter.

Tie up one of these, or any other pattern, and turn them in at the next meeting. You will receive 10 points and an entry into the monthly drawing for every dozen flies you turn in. More importantly, you will be helping your chapter raise funds for our various projects.

The chapter's fly inventory is still quite lean, and we need your help in getting it rebuilt. If you can't make the meeting, mail your flies to the chapter P.O. Box or turn them in to any director.

Bruce Seiden

(Continued from page 1) Plea For Youth put the guilt trip thing on you but that is not our style. Maybe it is best just to say HELP!!

There are no prerequisites for participation in our various events. We promise to greet you warmly, give you a job that makes your time commitment worthwhile, make sure you are comfortable and accepting of the task you are asked to perform and never to have you standing around doing nothing. If you help at one event, we will not expect you to come to any others unless you want to. We will encourage you to bring your child(ren) or significant other when appropriate (like Meadowfest). We will guarantee that you will get more out of the event than you give.

So please look at your calendar and squeeze in an EJTU event. Thanks, and the Hooters Chapter was just wishful thinking.

Limp Leader

Ramapo River Day

Ramapo River Day 2006 was a wet but successful event. Special thanks to all the members who came out and worked hard in the rain to make it all work.

Due to the poor weather and some transportation problems we only had about 50 kids but as usual they all had a great time and learned a lot about the environment. We hope this experience changes for the better the way they treat the world they live in.

Again thanks to all of you for you help.

Rich Malizia



Kids Help George Sort River-Bottom Critters



L to R: George Petersen, Rich Malizia, and NJ DEP Biologist – Bob Papson



Ray, Bruce and Ron Teach Casting



THAT THING Lives in There?

Photos by Bob Ribar

They're Back!

If you would like to try your hand (and tackle) on a new New Jersey fishery, read up on how to catch land-locked salmon because by the time you read this 1,400 of them will reside in two Sussex County lakes.

These salmon aren't the migratory species but rather a lake-dwelling species that can spend its entirely life in cool fresh water.

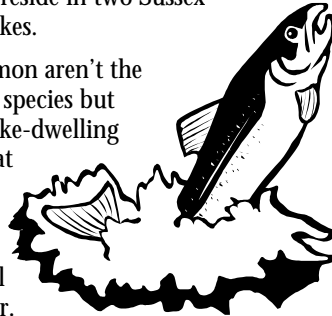
They are native to eastern Canada and Maine but they have been successfully introduced to waters in New Hampshire, Vermont, Massachusetts and New York. However, there are only a few bodies of water in New Jersey that have the proper habitat so the Division of Fish and Wildlife is only stocking these newcomers in two of our lakes, Wawayanda and Aeroflex.

Both Wawayanda (Wawayanda State Park) and Aeroflex (Kittatinny Valley State Park) have suitable year round coldwater fish habitat - Wawayanda has a surface area of 255 acres and maximum depth of 810 feet while Aeroflex has 100 acres and a depth of 101 feet – so our new neighbors should be able to find their desired below 70 degree temperatures. In addition both lakes also have forage bases of alewives for the salmon to feed upon.

When they were stocked on May 17, the fish were 1½ years old, eight inches long, and less than a quarter pound. By winter they should be 12 inches and growing into their common size – 12 to 17 inches – with the larger fish eventually weighing three pounds. Fifty years ago the state stocked these salmon in several lakes and in 1951 the state record, an eight-pounder was caught in Aeroflex Lake.

While Fish and Wildlife expects mature fish to enter shallows and attempt to spawn, they don't feel that natural reproduction will maintain the fishery. Because of this they plan on annual stockings.

These salmon resemble brown trout and there are different creel limits for each, so go to Fish and Wildlife's site (<http://www.state.nj.us/dep/fgw/>) for a description of how to tell them apart.



Buy Sun Screen and Mittens!

Psst! Wanna buy a 15 thousand year old used car? It's been in the family for 600 generations and runs great.

You don't think that my ancestors had cars back then? I think they must have!



First, a little history. Fifty to sixty thousand years ago the Arctic Ocean averaged a comfortable 74 degrees Fahrenheit because of trapped greenhouse gasses (Perhaps caused by smokestacks?). But then an ice cap began to grow in the arctic. As temperatures dropped, the surrounding water froze, and ice was piled higher and higher causing oceans to recede and shore lines to move seaward fifty or more miles. The ice cap continued to grow for 45 thousand years. Fifteen thousand years ago thirty percent of the earth's surface was covered with ice. Many miles of what had been sea-bed had become dry land and what is now the Bering Straight became an isthmus that connected Asia and the North-American continent.

This new land bridge allowed a few warmly dressed Asians to migrate eastward and then southward for a few thousand miles until they eventually formed the Navaho nation. Some of the new inhabitants, however, must not have liked the area because they continued in a southerly direction, populating everything down to Tierra del Fuego. When this migration was complete there were humans on all continents.

Then an odd thing happened. After the glaciers that were in some areas thousands of feet deep had scoured out the Great Lakes and Finger Lakes, flattened large areas, formed and filled most of Minnesota's and Wisconsin's lakes, and pushed a pile of soil into what we would later call Long Island, the ice stopped and began to slowly recede. How could this be? What caused this mass of ice to cease its southward march?

Eminent scientists such as Albert Gore and Barbra Streisand have given us the answer. Gore and Streisand, along with many scientists, have proven to their satisfaction that the temperature increase that we have supposedly been

(Continued on page 4)

Ramapo Ramblin'

We have been getting great reports from EJTU members who have been fishing the Ramapo. The state put in a lot of trout this year including some in the five pound class and I heard some of the fellows "complaining" that they had had number five tippets breaking off.

I did have a complaint that there were no trout by the bridge at Britt's tackle shop and that it was because Trout Unlimited guys were bucket stocking. I told the complainer that I was amazed at this because the "trout unlimited guys" do not help the state stock trout in the pre-season and in fact New Jersey's Chief Marine Biologist, Bob Papon, told me that they placed twenty percent more trout in the rivers post opening day. Last year the town of Oakland tried to shore up the bridge supports by removing stumps and debris from under the bridge and filling in the pool that was there. It appears that there is now no place for a respectable trout to exist there.

Did you know that there is a town park at the end of River Street across from Britt's tackle shop? This is a small piece of land running from the 287 bridge along the river. Some of the pools are quite deep so take care if fishing there. Do not park in Britt's lot but go over the bridge and you will find good parking.

Ramapo Day was great again this year in spite of the rain and problems getting the kids there. Once again hats off to Dr. Cristini and Rich Malizia and of course to all of our crew of volunteers that came regardless of the elements.

George Petersen reports that he could not do the BATS survey because of the weather but he will try to schedule one ASAP. He will give me the date in time for me to send out an EMAIL so that if you care to help you can.

If you are not on my list Email distribution list, please send your name and Email address to hermaril@aol.com and I will send you NJ fishing information and EJTU updates.

We will be placing water monitoring stations in the Ramapo and ask you to be careful of them while fishing. If you should find one that is not in the water please contact Ed Sikorski at 201-337-6396. They are in short sections of pipe that are chained to trees or roots.

This year we had to replace the cooler,

pump and buckets that we use for trout stocking. We placed them by Cindy's driveway while waiting for our guys to move them back behind her shed and someone came along and took them. We thank Ramsey Outdoor for their assistance in replacing the cooler and pump and thanks to our volunteers for finding more buckets.

We gave Cindy a park bench in appreciation of her allowing us to keep the equipment on her property.

The Bergen Federation of Sportsmen's Clubs will once again hold a fishing derby on June 17 at the Saddle River Park in Glen Rock. Take Saddle River Road north from Fairlawn. A short distance past Herold's garden shop you will see a Y in the road, keep right and the park is on the right a couple of blocks from the Y. Bring the kids for a great time. Refreshments will be served!

At the time of this writing it is raining and the river is rising so I guess it is a great day to count the flies and things like that!

I will see you down stream where we all live.

If you feel free to read this, thank a vet!

Herman Drenth

(Continued from page 3) Buy Sun Screen

experiencing recently (higher by about 0.45 degrees Celsius over the past century according to Accu-Weather but slightly cooler during the last 18 years according to satellite data) is being caused by human activities that result in a buildup of various gases that are now categorized as heat trapping greenhouse gasses.

Among these greenhouse gasses are carbon dioxide, methane and the CFCs that are used in refrigerants and aerosols. The "humans-caused-all-this" faction feels that the burning of fossil fuels and deforestation are the cause of higher levels of carbon dioxide, and that an increase in methane results primarily from landfill emissions, septic systems, rice paddies, and livestock. Substitutes have been found for most CFC uses and, while few of us have wiped out forests, all of us do burn large amounts of fossil fuels. We also add to landfills and eat rice but there

is little we can do about all those cows that happily eat grass, process it, then raise their tails and vent tons of methane into the atmosphere.

So where are we in the search for why glaciers receded thousands of years ago? Well, if we are to believe the Gore/Streisand camp and their coterie of scientists when they say that humans are the primary cause of temperature increases, we have to assume that this has always been true. So we have to assume that when our ancestors were wiping out the Mammoths they weren't chasing them on foot. They must have been tossing their stone-tipped spears from SUV's or pick-up trucks with hemi engines. I don't think that they were raising rice or installing large-scale septic systems so, outside of fossil fuel burning, what else could generate enough greenhouse gas to begin a 10 thousand year melting of the glaciers?

Moreover, we have to believe that our cave man ancestors caused the demise of the glaciers because we know that scientists rarely make mistakes that cause them to change their opinions...OOPS! I just noticed a yellowed 1975 NY Times clipping which reports that the earth may be heading for another ice age. This report came about because NASA data revealed that earth's temperature had been cooling from 1940 to 1970 - a 30 year period that caused scientists to forecast a continued, rapid cooling of the earth. At that time Science magazine was also suggesting that the continuing drop in temperature might be the beginning of a 10 thousand year ice age.

Oh, and by the way, do you remember the cow that jumped over the moon? Did you know that it landed on Mars? It's a fact! It must be true because in March 2004 a trio of research teams reported that they had found methane on Mars. And, that one cow must be eating a lot of Martian grass because astronomers have been monitoring our

neighboring planet's rising temperature and watching as its southern ice cap melts. Either that or our present day scientists must be smoking some of the cow's Martian grass.

A.U. Contraire

